



## Annual Community Report 2017



## Mission

Jewish Family & Children's Service (JFCS) is a nonprofit, non-sectarian organization that strengthens the community by providing quality behavioral health and social services to children, families and adults of all ages, in accordance with a Jewish value system that cares for all humanity.

## Vision

At JFCS, we hope for a future where families are strong, where our elders are cared for and where children are safe. Our dedication to our mission is strengthened by our commitment to our core Jewish values that honor community and the continuity of the generations.

## Jewish Values

### GUIDING OUR MISSION

KEHILA – Building community

TZEDAKAH – To do what is right and just

TIKKUN OLAM – Repairing the world

GEMILUT CHASADIM – Acts of kindness

## JFCS Governance Board of Directors\*

Paul E. Stander, M.D., MBA, Chair

Larry Lytle, Vice Chair

Noel Williams, Secretary

Vicki Cabot

Janice Dinner

Jay S. Fruchtman

Carol A. Kern

Rabbi John A. Linder

Robert Meza

Jeffrey Packer, D.O.

Michael Seiden

Edna Sitelman, Ed.D.

Richard Wolf

### Immediate Past Chair

Carol A. Kern

### Emeritus Board Members

Lenore Schupak

Carol Seidberg

*\*As of September 30, 2017*

## Executive Leadership Team

Lorrie Henderson, Ph.D., MBA, LCSW – *President & CEO*

Carrie Borgen, CPA, MBA – *Chief Operating Officer*

Pamela Brotman, LISAC – *Vice President of Compliance & Quality Management*

Mark Callesen, M.D. – *Chief Medical Officer*

Teresa Celaya-Garner – *Chief Financial Officer*

Frank Jacobson – *Vice President of Philanthropic Services*

Kevin Rhode, MBA, PMP – *Chief Technology Officer*

Ellie Schwartzberg, LPC – *Vice President of Older Adults and Jewish Community Services*

Linda Scott, MSW – *Vice President of Child & Family Solutions*

Gwynn Simpson, MSW – *Vice President of Human Resources*

Mary Jo Whitfield, MSW – *Vice President of Behavioral Health*

*JFCS touched the lives of 47,583 individuals through our behavioral health and social services agency-wide. 70 percent of those we served in fiscal year 2017 were children and teens.*

## A MESSAGE FROM JFCS LEADERSHIP



**Lorrie Henderson**  
*President and CEO*

Fiscal year 2017 marked a year of expansion for Jewish Family & Children's Service (JFCS). Our agency and Sojourner Center – one of Arizona's largest and longest-running domestic violence shelters – reached a definitive agreement in which Sojourner Center is operating as a subsidiary organization of JFCS, maintaining its own 501(c)(3) status. This combination has already increased efficiencies and effectiveness for survivors of domestic violence as well as both agencies, and it has positioned JFCS as a leading domestic violence services provider in Arizona.

This move has also cemented Sojourner Center's extraordinary legacy of providing safety, hope and healing to victims of domestic violence for many years to come, and it represents a valued extension of services that complement our Shelter Without Walls program. JFCS is committed to ensuring the continued, long-term impact of Sojourner Center on the thousands of community members it serves annually.



**Paul E. Stander**  
*Governance Board Chair*

Last year, we touched the lives of 47,583 children, teens and adults facing mental illness, family trauma, substance abuse, challenging financial circumstances in addition to other serious behavioral, physical and social obstacles. Our outcomes indicate that we are making a difference in our clients' lives: 100 percent of Shelter Without Walls domestic violence survivors report they have a comprehensive safety plan in place. Additionally, 100 percent of participants in our Real World Job Development program, which equips foster teens with job skills and internships, are in school or moving toward work readiness. And 98 percent of clients in our Older Adult program have remained living independently.

These outcomes would not be possible without our exceptional employees – we employed approximately 700 individuals in fiscal year 2017 to support our growing Behavioral Health division and our new relationship with Sojourner Center. Their passion and dedication are second to none and allow us to serve our community's most vulnerable populations.

We also owe a debt of gratitude to our rapidly expanding volunteer base, which includes more than 130 individual volunteers and 300 group volunteers, who enhance the services we provide in a multitude of areas. From teaching life skills to teens who are aging out of foster care to welcoming patients at the Michael R. Zent Healthcare Center to coordinating food drives for our Just 3 Things pantry, volunteers are integral to our operations.

This year and always, we give thanks to those who have joined our efforts to do whatever it takes to heal the lives of those in need.

***Healing Lives.*** Whatever It Takes.

## Creating Peaceful Families Serves 9,500 Youth

JFCS' Creating Peaceful Families program experienced a 16 percent increase in the number of youth served in 2017, touching 9,500 students. Creating Peaceful Families is a school- and community-based prevention program focused on positive family dynamics, character building and healthy life decisions. The program addresses critical issues (i.e. divorce, family conflict, child abuse, neglect, family violence, bullying and substance abuse) while helping youth gain the skills necessary to find effective solutions to problems; strengthen their support systems; and learn language and strategies to identify and communicate difficult issues before they escalate into crises. Prevention Specialists facilitate workshops, psycho-education groups and family engagement activities focused on finding healthy solutions to problems.



## Creative Aging Program Grows, Secures Additional Funding



In early 2017, JFCS launched a successful Creative Aging pilot project, funded with the generous support of Barbara and Barry Zemel and a grant from the Arizona Commission on the Arts, that served 84 individuals ranging in age from 63 to 94. JFCS was able to secure additional funding for a fall 2017 expansion. The Creative Aging project includes participatory classes for older adults that emphasize various arts disciplines. The goal is to promote social engagement and increase the quality of life of the seniors who participate.

Some of the classes offered include Readers Theater (performing plays while holding the script), Storytelling (learning about creative writing and sharing stories), and Dance and Voice (with a focus on individual performances as well as group singing) in partnership with venues located in Phoenix, Scottsdale and Sun City. Research by the National Institute on Aging and the National Endowment for the Arts demonstrates that participating in creative arts as one grows older helps improve aging-related health conditions, including cognitive decline and dementia.

## Employment Opportunities at JFCS Provide Competitive Compensation, Benefits

JFCS considers its employees to be its most valuable asset. JFCS employs approximately 700 individuals located across the Valley serving in numerous areas with a concentration in behavioral health careers. As a nonprofit, the organization connects its employees with several noteworthy programs, including the Public Service Loan Forgiveness program that encourages employees to enter and continue working full-time in public service occupations, and the National Health Service Corps Loan Repayment program that assists medical, nursing, dental and behavioral health clinicians. In addition to these opportunities, JFCS offers career development and mobility, as well as competitive compensation all within a competent, caring and compassionate workplace.

## JFCS Michael R. Zent Healthcare Center Launches Family Center of Excellence, Installs Urban Garden

The JFCS Michael R. Zent Healthcare Center (MRZ) is an integrated medical and behavioral health center located in the underserved Maryvale neighborhood of Phoenix that provides a more holistic approach to healthcare. On September 1, 2017, the JFCS MRZ Healthcare Center was recognized as a Family Center of Excellence, which represents a partnership with the Maricopa Integrated Health System to strengthen the Maryvale community by providing integrated care services, resources and support. The goal of the Center is to enhance resiliency, safety and promote permanence for children and families involved with the Arizona Department of Child Safety (DCS). The Center offers an integrated healthcare program where clients are treated by a collaborative team of therapists, clinicians, medical doctors, psychiatrists, nurse practitioners and other healthcare professionals. The coordinated care efforts of this multidisciplinary team means that every aspect of a patient's wellbeing is serviced in one convenient location.



Additionally, the JFCS MRZ Healthcare Center also created and constructed an urban garden that was completed in June 2017. Several staff members and volunteers have taken responsibility for the ongoing growth and care of this community garden. The Center also hosts a Fresh Express Mobile Truck twice a month that allows members of the community to purchase additional fresh produce.

## JFCS Expands Domestic Violence Services, Adds Sojourner Center

For more than 15 years, JFCS has been providing victims of domestic violence with critical safety planning, resources, support and case management for those who reside outside of a shelter setting as part of Shelter Without Walls. This year, JFCS and Sojourner Center – one of Arizona's largest and longest-running domestic violence shelters – announced a definitive agreement in which Sojourner Center operates as a subsidiary organization of JFCS. Sojourner Center is maintaining its name, brand and 501(c)3 status; however, the two organizations share significant synergies in their missions and programs and an alignment in organizational cultures. JFCS' existing work in domestic violence programs, history of operational excellence, and robust fundraising capabilities is enabling Sojourner Center to improve the long-term financial health of the organization. JFCS and Sojourner Center boast a combined 120-year history of providing services to Arizonans in need.

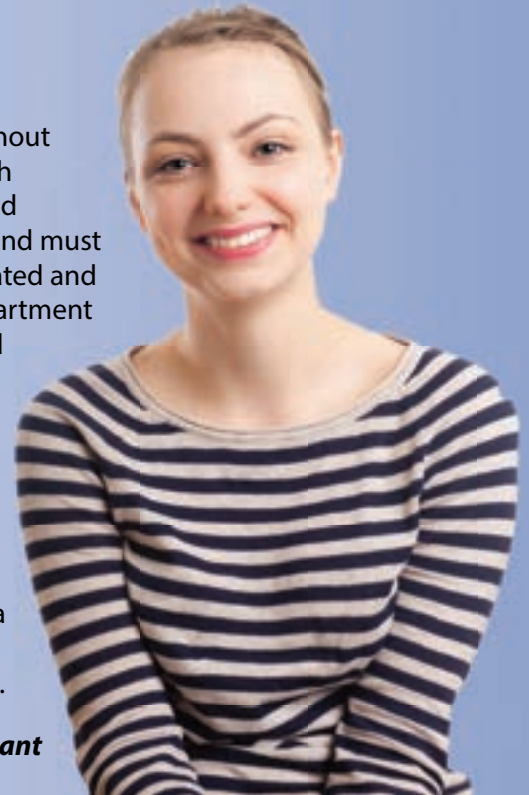


## SHELTER WITHOUT WALLS

Married life wasn't anything like I expected it to be. I was referred to Shelter Without Walls after my relationship with my husband became abusive. We had been high school sweethearts, but after we were married, I experienced severe physical and psychological abuse. At first, I blamed myself, thinking I was not good enough and must be doing something wrong. When our son was born, my husband became agitated and punched me in the face in the hospital right after the delivery. The Arizona Department of Child Safety (DCS) was called and removed my son from our care and opened an active case, which was devastating. I eventually forgave him and became pregnant with our second child, which DCS also took away since the abuse case was still open.

After participating in domestic violence education provided by Shelter Without Walls, I finally understand that what I experienced was not OK and that I needed to stop making excuses for my husband. I filed for divorce and my husband is now in prison for assaulting a police officer. I was able to obtain a full-time job and, after a lot of hard work, regain custody of my children. I am so grateful to JFCS for the assistance they provided me to get my life back on track.

*-Shannon\*, Shelter Without Walls participant*



## HOSPITAL CHAPLAINCY

My mother has always found comfort in visits from a hospital chaplain because she is chronically ill. I was visiting her bedside recently when Rabbi Robert Kravitz, the JFCS Hospital Chaplaincy Coordinator, stopped by. I couldn't believe it was the same rabbi who had married my husband and I more than 18 years ago. We were able to catch up and exchange stories and highlights of the past two decades. My mom's spirits were lifted tremendously by the visit. Rabbi Kravitz provides hope and healing to those in need, and my family is forever grateful for his dedication to the sick and ailing.

*-Iris and Amy\*, Hospital Chaplaincy program*

**47,583**  
lives were touched through our behavioral health and social services agency-wide

**100%**  
of Shelter Without Walls domestic violence survivors reported having a safety plan they understood and were comfortable with

**100%**  
of foster care teens in Real World Job Development reported being in school or moving toward work readiness

**98%**  
of seniors who received in-home care services maintained independent living status

## NURTURING PARENTING

Our family was referred to participate in JFCS Homebased Services as part of a court order. It was the last thing we wanted to do. Our lives were crazy – our 4-year-old son wasn't talking like he should be, I suffered from untreated postpartum depression after the birth of my daughter, and I was self-medicating with marijuana. I grew up in a very dysfunctional family and had no idea how to do anything different than what I experienced in my childhood. My father was rarely around and my mother abused drugs.

JFCS' Nurturing Parenting program helped us make changes in the way we parent, which changed our children's behavior for the better. Together, we are determined to break the cycle of dysfunction. JFCS also helped us get a behavioral health referral for my son to help with his speech delay. What we thought was going to be a terrible experience turned into life-changing education for us.

*-Maria and Pablo\*, Homebased Services clients*



## TRANSITION TO ADULTHOOD

A few bad decisions to use drugs changed my life forever. When my parents couldn't help because they had their own demons to battle, I was removed from my family and placed into a group home by DCS (Arizona Department of Child Safety). I was referred to JFCS' Transition to Adulthood program. My Transition Facilitator at JFCS helped me focus on what was really important – remaining sober from drugs, graduating high school and finding independent housing. I've been a part of Transition to Adulthood for three years now and I've accomplished those three things. I recently had a baby girl, but I now know I can care for her and provide her the home she deserves.

*-Latisha\*, Transition to Adulthood client*

*\*Names and images changed to protect client privacy.*

**95%**

of students and teachers who participated in Behavioral Health Prevention training reported a decrease in behavioral incidents

**85%**

of all JFCS funding goes directly to support client programs and services

**1/2**

of all foster care youth referred to the Maricopa County behavioral health system are assessed and treated at JFCS

**70%**

of our clients are children and teens

## 47,583

LIVES TOUCHED



## 97%

WERE AT OR BELOW THE POVERTY LEVEL



### 2,428

LIVES

were touched by Shelter Without Walls, which serves survivors of domestic violence



### 9,290

**JEWISH**

clients received care or assistance



### 4,680

**INDIVIDUALS & FAMILIES**

received Hospital Chaplaincy services



More than **500**

**CHILDREN AND ADULTS**

in need received Christmas or Hanukkah gifts



### 3,810

**INDIVIDUALS**

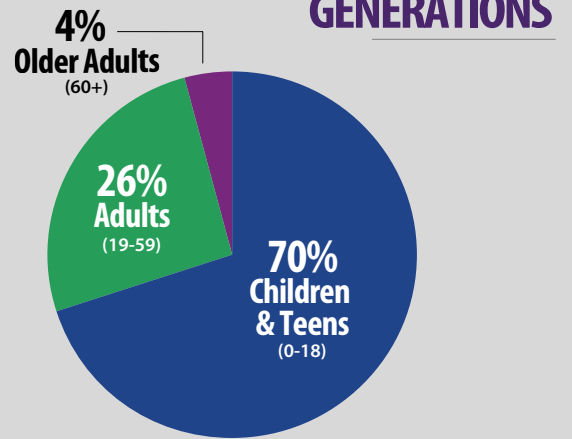
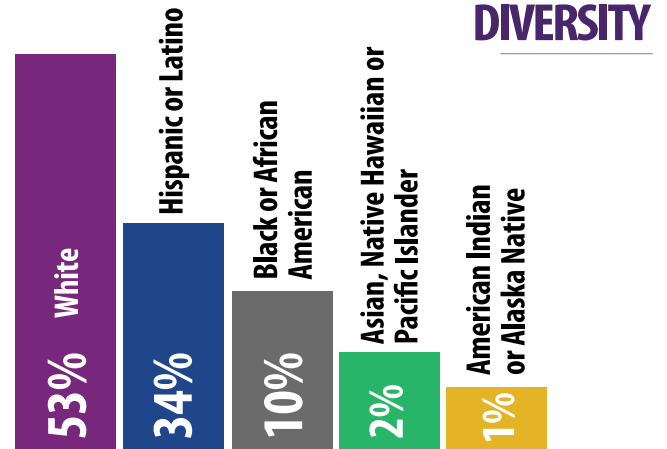
received Behavioral Health case management services



### 3,794

**VOLUNTEER SERVICE HOURS**

were completed and valued at more than \$90,000



Reflect the percentages served by program



# FY 2017 JFCS FINANCIAL STATEMENT

## STATEMENT OF FINANCIAL POSITION

### Assets

Current Assets	\$16,842,795
Long-Term Assets	11,880,663
<b>Total Assets</b>	<b>\$28,723,458</b>

### Liabilities

Current Liabilities	\$5,535,993
Long-Term Liabilities	5,379,445
<b>Total Liabilities</b>	<b>\$10,915,438</b>

### Net Assets

Unrestricted Assets	\$16,473,644
Temporarily Restricted	1,334,376
<b>Total Net Assets</b>	<b>\$17,808,020</b>

**TOTAL LIABILITIES AND NET ASSETS \$28,723,458**

## STATEMENT OF ACTIVITIES

### Support & Revenue

		%
Regional Behavioral Health Authority	\$32,359,452	60.65
Department of Economic Security	5,151,812	9.66
Other Contracts and Government Funding	4,470,988	8.38
Contributions and Grants	2,490,327	4.67
Jewish Community Association	275,600	0.52
Program Fees & Third Party	720,614	1.35
Management Services	246,824	0.46
Excess Assets acquired over Liabilities - Sojourner Purchase	6,843,770	12.83
Other	796,348	1.49
<b>Total Support &amp; Revenue</b>	<b>\$53,355,734</b>	<b>100.00</b>

### Expense by Program and Affiliates

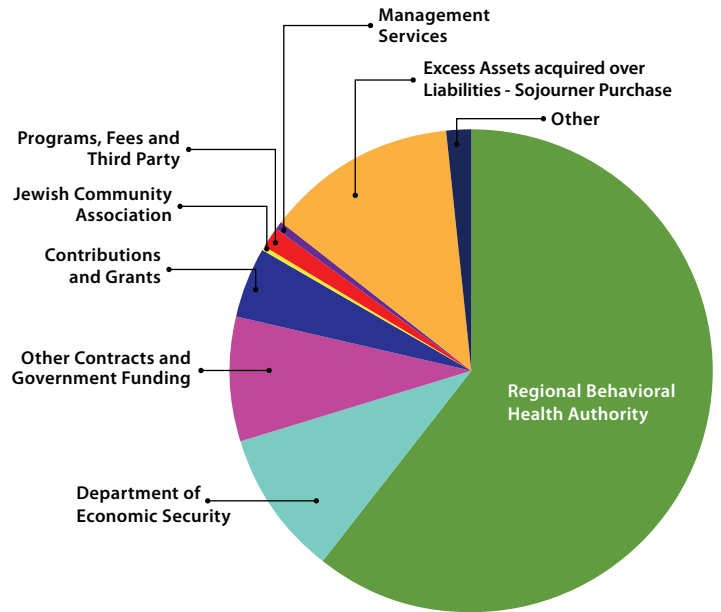
		%
Behavioral Health Services	\$35,594,100	76.91
Shelter Without Walls	442,243	0.96
Real World Job Development	597,950	1.29
Homebase Services	5,500,086	11.88
Older Adults Services	812,001	1.75
Center for Senior Enrichment	219,818	0.47
Jewish Community Services	394,029	0.85
Creating Peaceful Families	291,412	0.63
Sojourner Center	557,046	1.20
Fundraising	836,079	1.81
Management Services & Other	1,036,202	2.24
<b>Total Expense by Program</b>	<b>\$46,280,966</b>	<b>100.00</b>

Unrestricted	\$7,378,375
Temporarily Restricted	(303,607)
<b>Total Change in Net Assets</b>	<b>\$7,074,768</b>

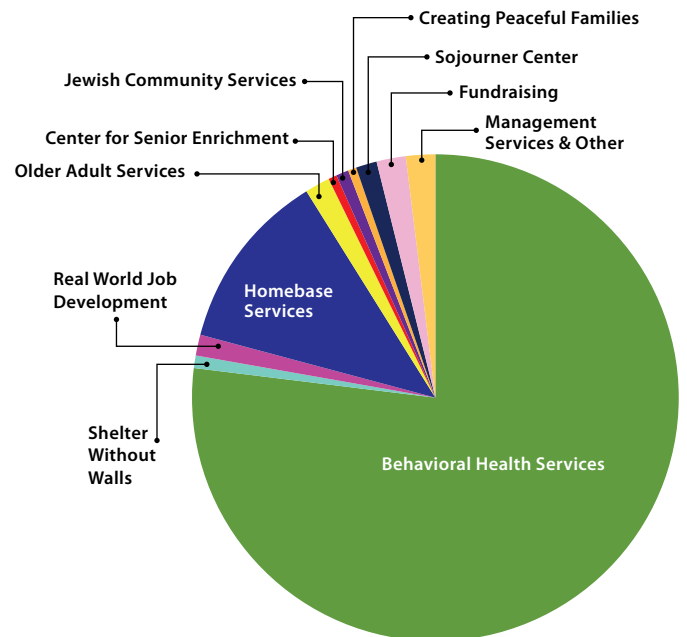
### Expense Summary

		%
Program Services	\$39,452,048	85.24
Administration	5,992,839	12.95
Fundraising	836,079	1.81
<b>Total Expense</b>	<b>\$46,280,966</b>	<b>100.00</b>

## SUPPORT AND REVENUE



## EXPENSE BY PROGRAM AND AFFILIATES



# 2017 FRIENDS OF JFCS



*Enid and Michael Seiden; Tracy and Larry Lytle; Jen and Jeff Kirschner; Linda Scott, Mary Jo Whitfield, Robert Meza, Carrie Borgen and Mike Snitz at the Family Friends of Distinction event*



*Susan and Dr. Paul Stander at the Brighter Tomorrow Luncheon*



*Rabbi John Linder at the Brighter Tomorrow Luncheon*



*Lynn Kahn, Marilyn Gerber and Priscilla Cohen at the Brighter Tomorrow Luncheon*



*Terri Jonas and Jayne Plotkin at It's a Wrap*



*Sarae Steremberg and Rivy Block at It's a Wrap*



*Cynthia Siegle and Judi Saperstein at It's a Wrap*



*Christine Leva, Diane Silver, Ruth Landau, and Judy Engelman at It's a Wrap*



*Volunteers at the JFCS Michael R. Zent Healthcare Center's Urban Garden project*



*Gail Baer, and Jane and Bruce Myers; Sandy and Beth Hoffman, Judy and Allen Silberman; Melissa Medvin and Jeff Flancer at the Family Friends of Distinction event*



*Nancy Campo, Mark Robert Gordon and Judy Ackerman at the Brighter Tomorrow Luncheon*



*Marilyn Urdang and Jamie Sunenshine at the Brighter Tomorrow Luncheon*



*Jody Goldman and Carol Seidberg at the Volunteer Appreciation Breakfast*



*Senior Program-Ice Cream Social*



*JFCS Real World Job Development Graduation*



*JFCS Real World Job Development Graduation*



*Frank Jacobson, Dr. Lorrie Henderson, Gail Baer and Carrol Gottfried at the Life & Legacy check presentation*

Date: *May 9, 2011*  
 PAY TO THE ORDER OF: *Jewish Family & Children's Service*  
*Ten Thousand and 00/100* \$10,000  
*Year 2 Honor Gift*  
 Jewish Community Foundation of Greater Phoenix

# Family Friends of Distinction

*We thank and recognize our most generous group of donors, our Family Friends of Distinction, who have made significant contributions to JFCS.*

*Lifetime Membership is extended to individuals, corporations, or foundations whose generosity over time reaches or exceeds \$25,000, while Annual Membership is extended to those who make cash gifts of \$1,000 or more annually.*

## LIFETIME MEMBERS FAMILY FRIENDS OF DISTINCTION

*As of April 12, 2018*

### Family Pacesetter

*(\$500,000 +)*

Arizona Community Foundation  
J.E. & Z.B. Butler Foundation  
Jewish Community Foundation of  
Greater Phoenix  
Jewish Federation of Greater Phoenix  
Lubin-Lorsch Family  
Molly Blank Fund of The Arthur M. Blank  
Family Foundation  
Valley of the Sun United Way  
Virginia G. Piper Charitable Trust

### Family Visionary

*(\$250,000 +)*

APS  
Arizona Republic/12 News Season for Sharing  
Child Abuse Prevention License Plate  
Program  
Jerry Hirsch  
Kemper and Ethel Marley Foundation  
Nina Mason Pulliam Charitable Trust  
Lenore and Eugene\* Schupak

### Family Philanthropist

*(\$100,000 +)*

Anonymous  
Bank of America Charitable Foundation  
BHHS Legacy Foundation  
Carmen and Michael Blank and Family  
Blue Cross Blue Shield of Arizona  
Board of Visitors  
Cypress HomeCare Solutions/  
Sheldon R. Roth & Family  
Dignity Health  
Harriet and Richard Gottlieb  
Susan and Nestor Guzman  
Arlene and Michael Lanes  
Jan and Tom Lewis/T.W. Lewis Foundation  
Lubin-Lorsch Family  
Mercy Maricopa Integrated Care  
Aileen\* and Meyer Osofsky  
Ruth B. Pearson\*  
Rosenbluth Family Foundation  
Muriel Ross\*  
The Schupak Family Foundation  
Carol and Ken Seidberg  
State of Arizona - Arizona Criminal  
Justice Commission  
The Robert I. Sweet Charitable Remainder Trust  
Thunderbirds Charities  
Women's Independence Scholarship  
Program, Inc.

### Family Champion

*(\$50,000 +)*

Anonymous (3)  
Avon Foundation for Women  
Daron and Ron\* Barness  
Cardinals Charities  
Cheryl and Robert Carr\*  
City of Glendale/Glendale from the Heart  
Flo and Paul Eckstein  
Estate of E. Louise Gaudet  
Executive Council Charities  
Marcia and Norman\* Goodman  
Harriet and Richard Gottlieb  
Harold & Jean Grossman Foundation  
Anita and Jerome Gutkin  
The Harry and Jeanette Weinberg  
Foundation, Inc.  
Harwit Charitable Trust  
The Philip and Judith Hirsch Charitable  
Remainder Trust  
Iva and Larry Hirsch  
J.W. Kieckhefer Foundation  
JPMorgan Chase & Co.  
Knight Transportation  
Arlene and Michael Lanes  
Janine Levin  
Mervyn Levin  
Eleanor Light  
The Lodestar Foundation  
Nationwide Insurance Foundation  
William L. and Ruth T. Pendleton  
Memorial Fund  
Phoenix Suns Charities  
Sheldon R. Roth and Family  
Barbara and Irving\* Rousso  
Penny and Robert Sarver  
Sheila Schwartz  
Enid and Michael Seiden  
Paula and Arlie Sherman  
Edna and Arthur Sitelman  
Rhoda Krasno Tannenbaum Bereavement Fund  
Cindy and Mike Watts  
Wells Fargo  
Diana and Allan Winston  
Barbara and Barry Zemel  
Laura Ziff and Scott G. Lentin Family Donor  
Advised Fund

### Family Patron

*(\$25,000 +)*

ABLE Financial Group  
American Express Foundation  
Anderman Family Charitable Fund/Arizona  
Community Foundation  
Anonymous  
Arizona Foundation for Behavioral Health

Basic Needs Collaborative  
The Bozena and Josef Zelenda  
Charitable Foundation  
Judy and Peter Brandeis  
Alice\* and Peter Buseck  
Susan and Michael Chesin  
Priscilla and Louis Cohen  
Francine Coles  
CopperPoint Insurance Companies  
Cox Charities  
Creative Women of Pinnacle Peak, Inc.  
Diane and Bruce Halle Foundation  
Janice and Dean Dinner  
DMB Associates Inc.  
Emergency Food and Shelter Program  
Cheryl and Jeffrey Fine  
Jeff Flancer  
Flancer's  
Flex Print, Inc.  
Freeport-McMoRan Copper & Gold Foundation  
Meri and Steven\* Friedman  
Anita and Jerome Gutkin  
Lawrence and Iva Hirsch  
In-n-Out Burger Foundation  
The Jonathan Dreier Foundation  
The Joseph & May Winston Foundation  
Sue and Robert\* Karatz  
Carol and Allan Kern  
Sydney and Kevin Knight  
Helen and Ed\* Korrick  
Hope and Randy Levin  
Sheri and Tom Levin  
Buddie and Hank Levkoff\*  
Lincoln GIVES  
Jack Linde  
Lovitt & Touché, Inc.  
Magellan Health Services  
MAZON  
Mercy Care Plan  
Pam and Bruce Meyer  
Valerie and Herschel Richter  
Fran and Al Sachs  
Salt River Project - SRP  
Brooks T. Hozier and Alan M. Schiffman  
Rana and Joseph Schwartz  
Linda and Earl Secore  
Lola\* and Jacob Shapiro  
Kathryn Simon  
Susan and Paul Stander  
Trends Charitable Fund  
Joan and Ron Yagoda

## ANNUAL MEMBERS

*Gifts from  
October 1, 2016 - September 30, 2017*

### Family Visionary

*(\$250,000 +)*  
Kemper and Ethel Marley Foundation

### Family Philanthropist

*(\$100,000 +)*  
BHHS Legacy Foundation  
Jewish Federation of Greater Phoenix  
Molly Blank Fund of The Arthur M. Blank  
Family Foundation

### Family Champion

*(\$50,000 +)*  
Carmen and Michael Blank and Family  
Blue Cross Blue Shield of Arizona  
Susan and Nestor Guzman  
Jewish Community Foundation of  
Greater Phoenix  
Jan and Tom Lewis/T.W. Lewis Foundation  
Virginia G. Piper Charitable Trust

### Family Patron

*(\$25,000 +)*  
APS  
Child Abuse Prevention License Plate Program  
Diane and Bruce Halle Foundation  
Dignity Health  
Harwit Charitable Trust  
Arlene and Michael Lanes  
Lubin-Lorsch Family  
Barbara and Barry Zemel

### Family Ambassador

*(\$10,000 +)*  
Arizona Republic/12 News Season for Sharing  
Bank of America Charitable Foundation  
Executive Council Charities  
Jeff Flancer/Flancer's  
Carol and Allan Kern  
Sydney and Kevin Knight  
Knight Transportation  
Medical Staff of Abrazo Maryvale Campus  
Pam and Bruce Meyer  
Nationwide Insurance Foundation  
Valerie and Herschel Richter  
Enid and Michael Seiden  
Wells Fargo  
Inez and Alexander White  
Women's Independence Scholarship  
Program, Inc.

### Family Benefactor

*(\$5,000 +)*  
ABLE Financial Group  
Anonymous  
The Bozena and Josef Zelenda  
Charitable Foundation  
Alice\* and Peter Buseck  
City of Glendale/Glendale From the Heart  
Francine Coles & Family

CopperPoint Insurance Companies  
Dickinson Wright PLLC  
District Medical Group, Inc.  
Diane and John Eckstein  
Flo and Paul Eckstein  
Diana and Mark Feldman  
Gila River Indian Community  
Harriet and Richard Gottlieb  
Harold & Jean Grossman Foundation  
Anita and Jerome Gutkin  
Iva and Larry Hirsch  
Intel Corp.  
John F. Long Foundation  
Sue Karatz  
Deana Katz  
Susan and William Levine  
Eleanor Light  
Tracey and Larry Lytle  
Mercy Care Plan  
Mercy Maricopa Integrated Care  
Holly and Jeff Packer  
Barbara and Irving\* Rousso  
Salt River Project - SRP  
Sheila Schwartz  
Carol and Ken Seidberg  
Paula and Arlie Sherman  
Edna and Arthur Sitelman  
Susan and Paul Stander  
Sarae and Zuli Steremberg  
Lisa and Rick Wolf

### Family Guardian

*(\$2,500 +)*  
Sue and David Adatto  
Arizona Commission on the Arts  
Arizona Community Foundation  
Bank of America  
Jessica and David Barranco  
Blood Systems  
BNSF Railway Foundation  
Vicki and Howard Cabot  
Beth Crandell & Mona C. Crandell  
Cypress HomeCare Solutions/  
Sheldon R. Roth & Family  
Paige and Burl Daniel  
Dr. Abraham Tamis Memorial Fund  
at Jewish Community Fund  
Angela and Doug Ducey  
Emergency Food and Shelter Program  
Fenway XV, LLC  
FineMark National Bank & Trust  
Friedel Family Foundation/Randi and  
Alan Jablin  
Susan and Jay Fruchtman  
Pnina Levine and Alan Gold  
Joyce and Neil Goldstein  
Stephanie and Frank Jacobson  
Ellen and Bob Kirschenbaum  
Jennifer and Jeffrey Kirshner  
Helen and Ed Korrick  
Barbara and Theodore Kraver  
Marlene and Lanny Lahr  
Sheri and Tom Levin

Lovitt & Touche, Inc.  
Emily Mallin and Jason Klein  
Tahnia and Jeffrey McKeever  
Esther and Abe Orlick  
Michele Scheiner-Raskin and David Raskin  
Rosenbluth Family Foundation  
Muriel Ross\*  
Linda J. Scott  
Scottsdale Charros/The Charro Foundation  
Lola and Jacob Shapiro  
Sharon and Garry Shuster  
Carol and Scott Snyder  
Sonora Quest Labs  
Stander, Jacobs & Duchovnay Families  
Karen and Richard Stark  
State of Arizona - Arizona Criminal  
Justice Commission  
Gail and Dan Tenn  
Topaz Information Solutions  
UnitedHealthcare - Community Plan  
Weisblat Philanthropic Fund of the  
Dallas Jewish Community Foundation/  
Jolene and Harvey Weisblat  
Wells Fargo Advisors  
William L. and Ruth T. Pendleton  
Memorial Fund  
Maria and Noel Williams  
Diana and Allan Winston  
Dorothy Zusman

### Family Circle

*(\$1,000 +)*  
Regina and Seth Abraham  
Wendy and Ian Ackerman  
Judy Ackerman and Richard Epstein  
Roberta Aidem/Media Foundation  
Rebecca Ailes-Fine and Peter Fine  
Anonymous (3)  
Judy and Arnold Alpert  
American Express Foundation  
Ellen Andres-Schneider and Ralph Andres  
Arizona Bike Week Charities  
Jerome M. Aronson  
Gail and Michael Baer  
Cathy and Joel Barraclough  
Diane and Steven Bienstock  
Leslie and Robert Blendu  
Sheryl Bronkesh  
Cindy and Adam Brooks & Family  
Karen and Jay Bycer  
Wendy and David Carriere  
Carol R. Carro  
David Chasson  
Susan and Michael Chesin  
Shirlee and Eugene Cohen  
Coldwell Banker Residential Brokerage  
Samuel Coles  
Zachery Coles  
Sam G. Coppersmith  
Christine A. Crabtree  
Beverly Crair  
Creative Women of Pinnacle Peak, Inc.  
Janice and Dean Dinner

Aviva and Bram Duchovnay  
 Judy and David Efron  
 Ellen and Lee Eisenberg  
 Bernadette and Philip Evans  
 Betty and Bert Feingold  
 Marianne Fossum and David Felman  
 Anita Fishman  
 Sherman and Sarilyn Fogel  
 Beverly and Theodore Frumkin  
 Gan Bamidbar  
 Marilyn Gerber  
 Renee and Peter Gerstman  
 Judith and Herb Gold  
 Murray Goldberg  
 Beth and Robert Goldman  
 Laurie and Charles Goldstein  
 Betsy and Ken Gometz  
 Gary Gordon  
 Sara and Arthur Gordon  
 Gillian Hamilton  
 Lorrie Henderson  
 Ruth and Brooks Hilliard  
 Howard Hirsch  
 Rachel and Jonathan Hoffer  
 Audrey and Fred Horne  
 Mimi and David Horwitz  
 Hospice of the Valley  
 Brooks T. Hozier and Alan M. Schiffman  
 In-n-Out Burger Foundation  
 Julie and Jonathan Ivanhoe  
 F. Peter Jenkins  
 Audrey and Melvin Jung  
 Selina and Elijah Kaminsky  
 Elaine and Joel Kellmanson  
 Terri Keville  
 Russell Kolsrud  
 Andrea and Daniel Kravets  
 Sue and Neal Kurn  
 Phyllis Palm and Robert Lantz  
 Chu and Stuart Lazar  
 Evan C. Leibner and Tami D. Dairiki  
 Cynthia and Jay Levin  
 Judy and Warren Levine  
 Lucinda and Marc Lieberman  
 Nancy and Rabbi John A. Linder  
 Judy and Sam Linhart  
 Janna and Michael Malkin  
 Skeeter and Gary Marcus  
 Microsoft  
 Martha C. Miller  
 Andi and Sherman Minkoff  
 Jane and Bruce Myers  
 Dana and Richard Naimark  
 Roland Nehring  
 Sally Oscherwitz  
 Allison and Dan Oseran  
 Felicia and Glenn Pahnke  
 Susie and Richard Pallan  
 Fran and Robert Parker  
 Ruth and Raymond Perlman  
 PSA Behavioral Health Agency  
 Deborah and Richard Riley  
 Laura and Neal Rockowitz

Howard and Judy Rosen  
 Cyndi and Jamie Rosenthal  
 Barbara and Edward Rothe  
 Reba and Allen Rothman  
 Fran and Al Sachs  
 Linda and Sherman Saperstein  
 Joel Schaller  
 Barbara and Gary Schenck  
 Wendy and Richard Schneider  
 Esther and Donald Schon  
 Claire and Seymour Schonwetter  
 Lenore and Eugene\* Schupak  
 Anat and Adam Schure  
 Rana and Joseph Schwartz  
 Tracy and Marc Schwimmer  
 Secore & Niedzialek, P.C./Linda and Earl Secore  
 Marcia and Al Silberman  
 Judy and Allen Silberman  
 Julie and Michael Silver  
 Susan S. Silver  
 George-Ann and Barry Silverman  
 Cecily and Quinn Snyder  
 Susan and Ronald Starkman  
 Helen and Darryl Stern  
 Sundt Foundation  
 Jamie and Peter Sunenshine  
 Robin Trush  
 Valle Del Sol  
 Deidre Vecchione  
 Mary Jo and Burke Whitfield  
 Jeanne and Stephen Winograd  
 Joan and Ron Yagoda

#### LEGACY SOCIETY MEMBERS

*The JFCS Legacy Society is comprised of donors who have confirmed us as a beneficiary in their estate plans by listing JFCS in their will, trust, life insurance or retirement plan.*

*Gifts and commitments through September 30, 2017*

Judy Ackerman  
 Sue and David Adatto  
 Phil Adelman  
 Anonymous (10)  
 Leo and Lore Baer\*\*  
 Gail and Michael Baer  
 Anonymous  
 Tricia and Andy Beran  
 Carmela and Michael Blank  
 Adam & Cindy Brooks and Family  
 Wendy and David Carriere  
 Francine Coles  
 Janice and Dean Dinner  
 John D. Eckstein  
 Diane N. Eckstein  
 Paul and Flo Eckstein  
 Corinne F. Ehrlich\*\*  
 Ellen and Lee Eisenberg  
 Nancy Ruth Feiges and Isaac (Ike) Feiges  
 Steve\* and Meri Friedman  
 Marcia and Norman\* Goodman  
 Carrol Gottfried  
 Walter G. Gray in Honor of Michael Steinberg

Anita and Jerome Gutkin  
 Lorrie Henderson  
 Adrien Herzberg  
 The Philip and Judith Hirsch Charitable Remainder Trust\*\*  
 Jerry Hirsch  
 Bernard and Dora Jacobs Endowment Fund  
 Stephanie and Frank Jacobson  
 Philip and Elaine Katzke Designated Fund of the Jewish Community Foundation\*\*  
 Carol and Allan Kern  
 Helen and Ed\* Korricks  
 Stuart and Chu Lazar  
 Tracey and Larry Lytle  
 Herman S. and Golda Mandell Living Trust\*\*  
 Joan and Lawrence Marcus  
 Robert Meza  
 Bill and Tanya Miller  
 Estate of Bettie M. Miller\*\*  
 Susan and Herbert\* Miller  
 Andi and Sherman\* Minkoff  
 Nancy and Larry Moffitt  
 Bruce L. Nager\*  
 Dr. Steven L. Oscherwitz  
 The Packer Family Trust  
 Felicia and Glenn Pahnke  
 Ruth B. Pearson\*\*  
 Helen Pezdirtz\*  
 Rachel and Elliot Rabinovich  
 Janet and Thomas Rees  
 Muriel Ross\*\*  
 Susie and Bob Roth  
 Sari Roth-Roemer  
 Lenore and Eugene\* Schupak  
 Ellie Schwartzberg  
 Ruth and Edward Schwarz\*\*  
 Carol and Ken Seidberg  
 Enid and Michael Seiden  
 Paula and Arlie Sherman  
 Dr. Edna and Arthur Sitelman  
 Susan A. Stander  
 Paul E. Stander  
 Clara D. Stander\*\*  
 Sarae Steremberg  
 The Robert I. Sweet Charitable Remainder Trust\*\*  
 Dr. Abraham Tamis Memorial Fund at Jewish Community Fnd\*\*  
 Estate of Rhoda Krasno Tannenbaum\*\*  
 Naomi\* and Gerald Weiner  
 The Wexler Family Foundation  
 Lisa and Rick Wolf  
 Barbara and Barry Zemel  
 Michael R. Zent\*\*  
 Laura Ziff

\* Of Blessed Memory

\*\* Gift Realized



"My husband comes from a family of nine children and the older siblings have always been available to help the younger ones when needed. Sometimes people just need some help to get back on their feet, as is the case with victims of domestic violence. We hope our gift to JFCS provides comfort to the women and children who are victims of abuse and need safe shelter and vital services in order to leave their abusers."

*-Susan and Nestor Guzman,  
JFCS donors*



"We recognize the unique programs that JFCS delivers to our community and are thankful for its leadership and expertise in filling these needs. Whether it is seniors or those that need emergency help, we are proud to partner with JFCS and to fund and support its work."

*-Mark Feldman and David Weiner,  
co-chairs, Jewish Federation of  
Greater Phoenix*

"JFCS specialists with Creating Peaceful Families are dedicated to supporting the social and emotional needs of students in our school district. Their talented team teaches positive coping strategies that enhance the educational experience and give students the skills needed to be successful in the classroom."

*-Shannon Cronn,  
NCSP, Clinical Services  
Coordinator, Scottsdale  
Unified School District*

"When I was hospitalized for the high-risk birth of my firstborn child, Rabbi Kravitz provided spiritual comfort and support and took time to recite the Mother's Prayer with me. By the end, I had tears running down my face and we said 'Shehechyanu' (a blessing to mark special occasions) together. It was a special moment for my family, and we are grateful."

*-Hospital Chaplaincy  
participant*

"Arizona Community Foundation supports the affiliation between Sojourner Center and JFCS because it brings together two organizations with fundamental strengths in addressing the issue of domestic violence services in the community. Sojourner Center provides the vital shelter services needed within the community while JFCS focuses on financial and operational plans to support long-term viability, in addition to continuing its focus on the Shelter Without Walls program."

*-Jacky Alling,  
Chief Philanthropy Officer,  
Arizona Community Foundation*

"We want to get seniors to use their brains in new and innovative ways. I've had participants tell me that they've never performed before, but that they are excited to try something new."

*-Janet Rees,  
JFCS Creative Aging Coordinator*



"JFCS is a jewel in our community and we are privileged to be donors and make a difference."

*-Barbara and Barry Zemel, JFCS  
Legacy Society members*



**JFCS ADMINISTRATION OFFICES**  
4747 North 7th Street | Suite 100  
Phoenix, AZ 85014 | 602.279.7655  
[www.jfcsaz.org](http://www.jfcsaz.org)



Excellence in Giving  
Philanthropy Partner



Strategic Partner of Jewish  
Federation of Greater Phoenix



Accredited by the National Council  
on Accreditation of Services for  
Families and Children